



■ **Workflow**

Installation instructions

July 2023



Table of contents

Chapter 1 Installing the programmes.....	2
Chapter 2 Licensing Novaline Workflow	4
Chapter 3 Setting up the system	5
3.1 Workflow.....	5
3.2 Setup the data source definition	6

Chapter 1 Installing the programmes

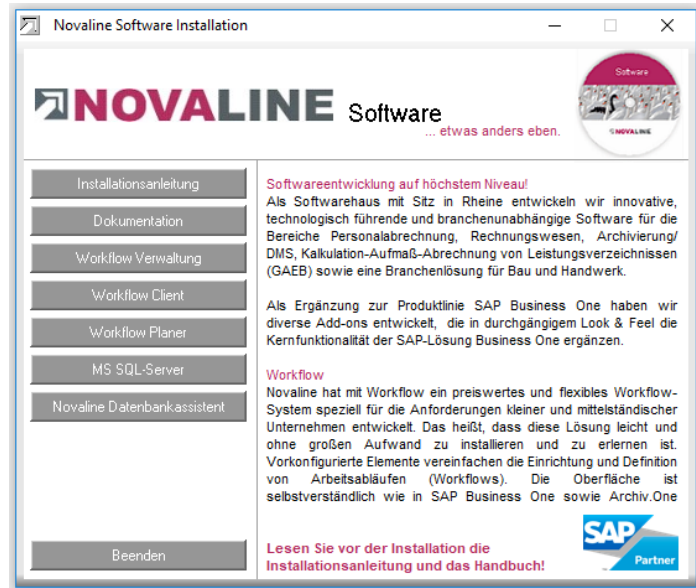
1. Insert the installation CD into your CD-ROM drive. After inserting the programme CD, the start screen is displayed. If the installation dialogue does not open, start it via the file "Start.exe" from your CD directory.
2. The installation of Novaline Workflow requires the use of a Microsoft SQL server.

More information on installing the SQL server can be found on the programme CD under the menu item "MS SQL server" or online on our website:
[www.novaline.de / Info-Downloads / MS SQL-Server](http://www.novaline.de/Info-Downloads/MS-SQL-Server)

Direct link: <https://www.novaline.de/info-downloads-ms-sql-server.mtml>



- If the SQL Server is running, select the menu item "Workflow Verwaltung" for installation and follow the on-screen instructions.



- The Workflow Client and Workflow Planner are installed automatically.

Start the "Workflow Verwaltung".

After the first start of the programme, the connection to the workflow database must be set.

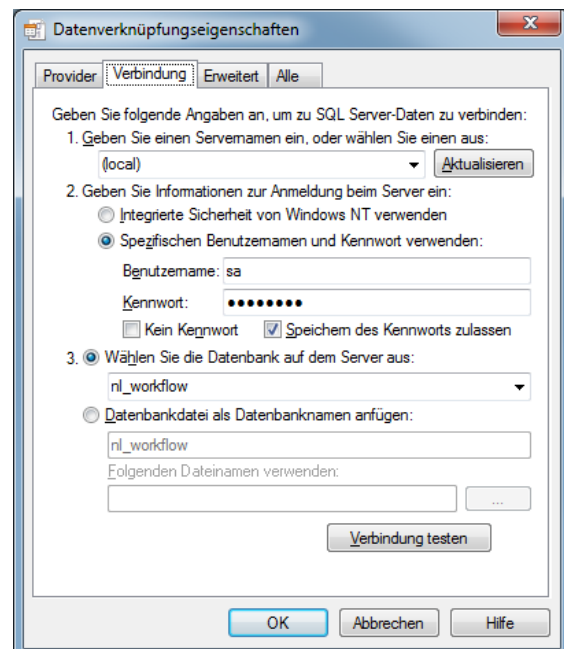
The dialogue "Data link properties" appears.

Enter the name of the SQL server and the information for logging on to the server here.

Enter the user name "sa" and the password you have stored.

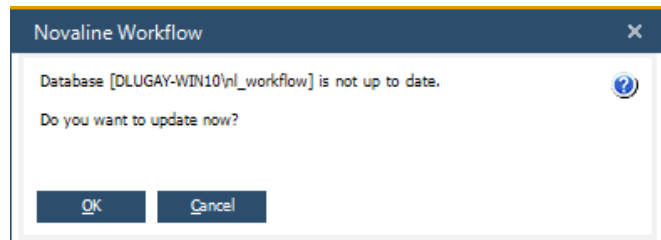
The proposed database "nl_workflow" must be selected.

Save the entries with "OK".



Chapter 2 Licensing Novaline Workflow

Start the “*Workflow Verwaltung*” of the programme group *Novaline Software, Novaline Workflow; Workflow Verwaltung*.

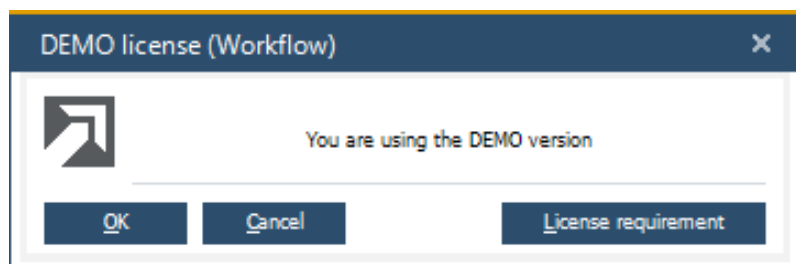


When you start the Novaline Workflow, a message appears stating that the database is not up to date. Confirm the message with *OK*.

Then confirm the login dialogue with the username *Administrator*. The password remains blank.

Licensing is only required for the initial installation!

In the *DEMO license (Workflow)* dialogue confirm the *License requirement* button.



In the following dialogue *License requirement (Workflow)* select the button *Open license file* and read in your valid licence key.

If you do not have a valid license key, please request one from Novaline Informationstechnologie GmbH by telephone on +49 (0)5971 868-0 or via mail at vertrieb@novaline.de.

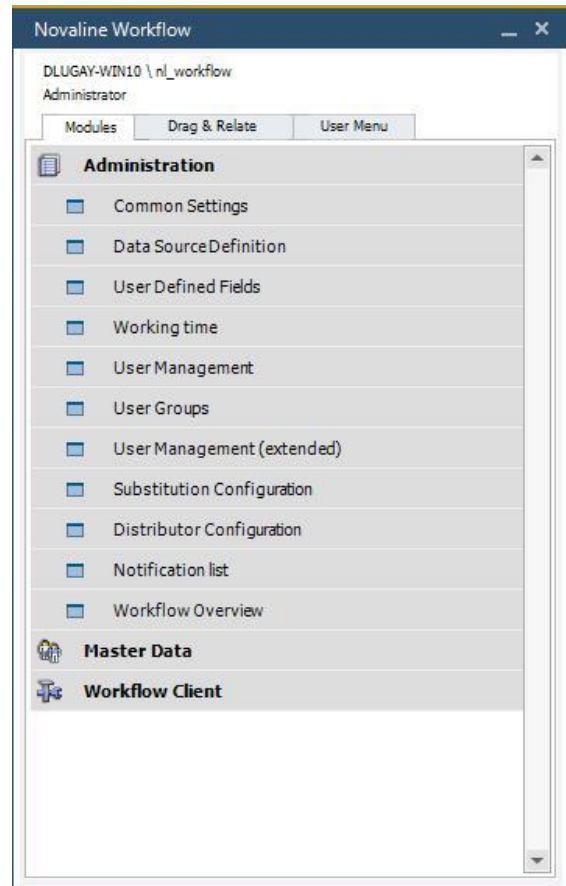
Chapter 3 Setting up the system

3.1 Workflow

Setting up the system is only necessary during the initial installation!

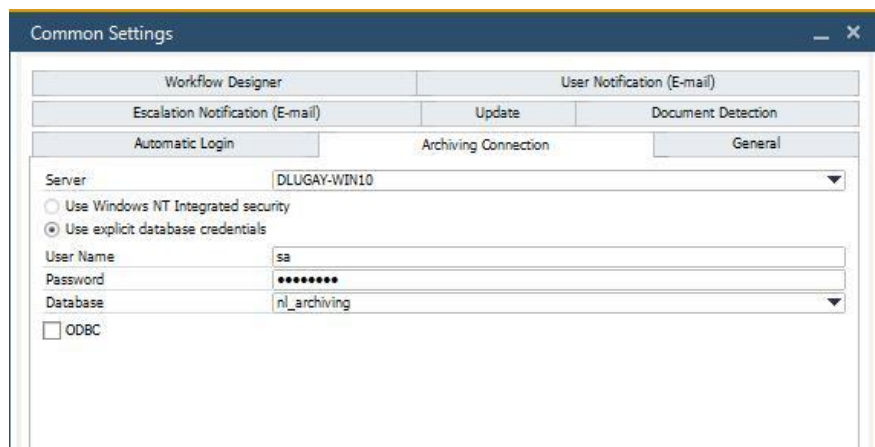
Start the “Workflow Verwaltung”.
Before you can use the programme, the archiving connection must be established.

Switch from the main menu to the *Common Settings*.



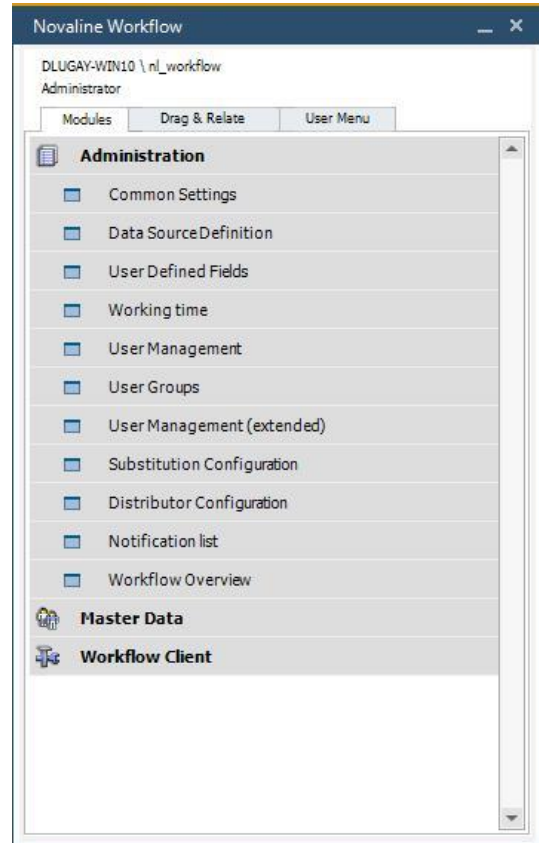
Make the following entries in the dialogue:

Enter the server name in the first field *Server*.
Enter the SQL server user data in the “User Name” and “Password” fields. Finally enter the database of the archive.

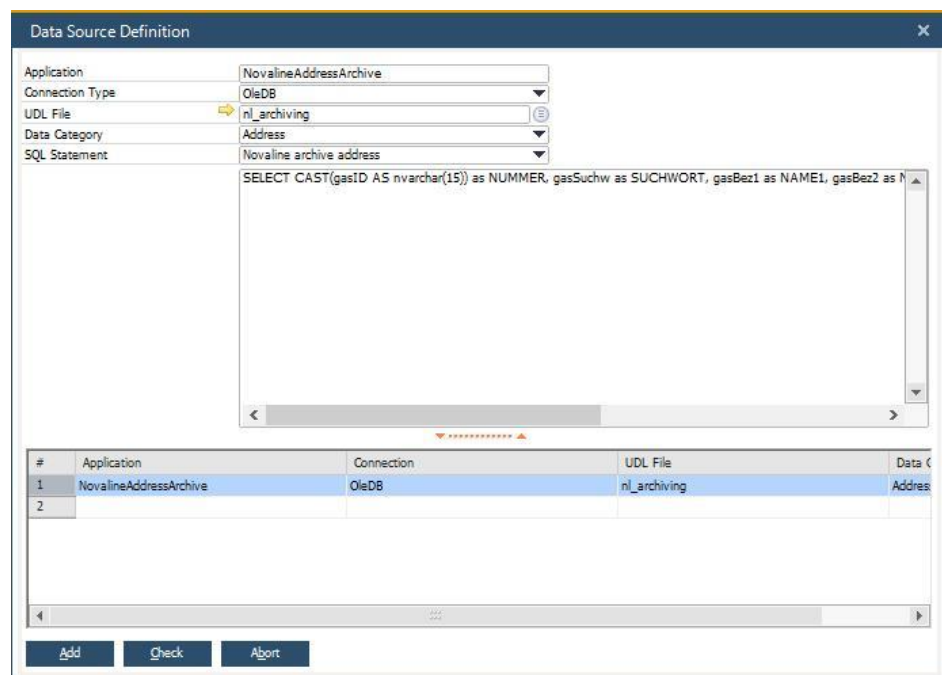


3.2 Setup the data source definition

To set up the data source definition, please go to "Administration" and "Data Source Definition".

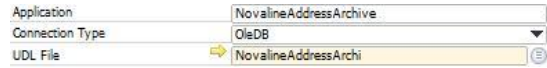



As an example, the Novaline archive addresses have been created here.



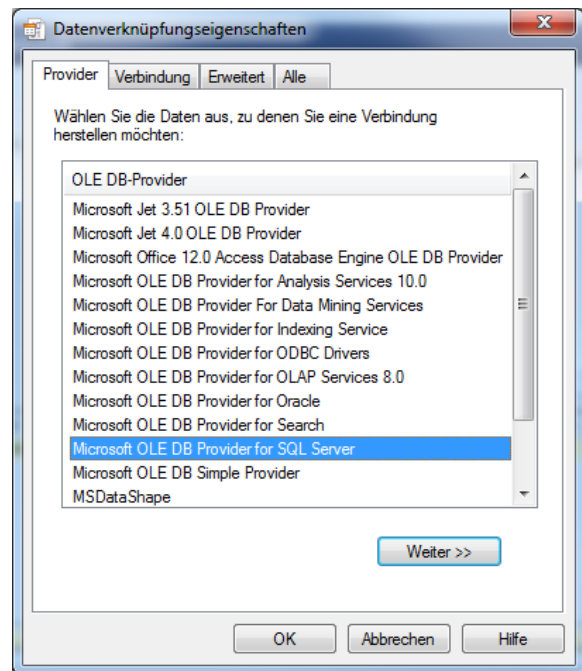
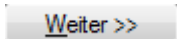
UDL File field:

Enter the address in the "Application" field and copy the entered one. Paste the previously value with CTRL + V into the "UDL File" field again.



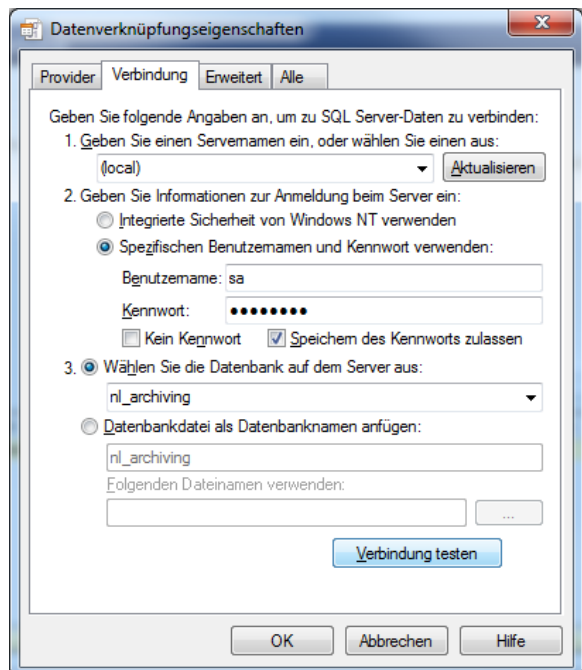
Click on the button  to establish the connection to your database.

The data link properties open. Switch to the *Provider* tab. Select the entry *Microsoft OLE DB Provider for SQL Server* as the *OLE DB Provider* and then click *Next*.



On the *Connection* tab select your server, enter your user name and then select the database.

Complete your entries with *OK*.



Data Category field:

Accept the suggested value

Data Category

Address of the *Data Category* field.

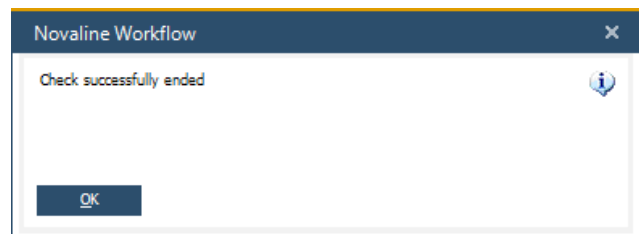
SQL Statement field:

Select the *Novaline archive addresses* entry in the *SQL Statement* field.

SQL Statement

The selected statement is displayed.

Confirm your entries with *Add* .
Then click on the *Test* button. The
appeared dialogue stating that the test has
been carried out successfully.



Then click *Cancel* and then *OK* .