



■ **Construction.One**

# **Installation instructions**

February 2021

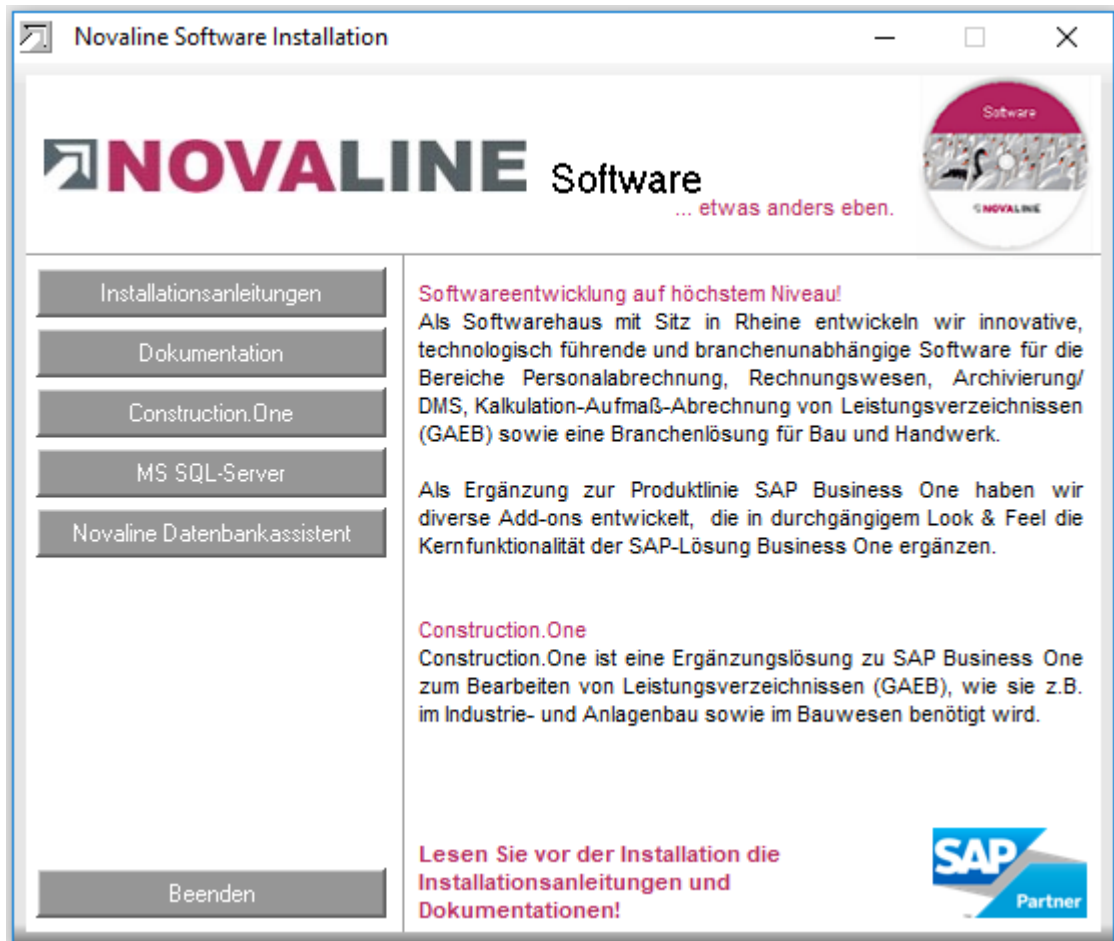


## Table of contents

<b>Installation Construction.One .....</b>	<b>3</b>
<b>New client .....</b>	<b>6</b>
Mandate data.....	6
<b>Menu designer.....</b>	<b>8</b>
<b>Import default menu.....</b>	<b>9</b>

## Installation Construction.One

After inserting the programme CD, the start screen is displayed:



Please proceed as follows:

1. Select the menu item Construction.One and follow the further on-screen instructions.

At the end of the installation, close the above window with *Exit*. This completes the installation.

2. Share the *Novaline* directory on the client machine to get access to the start file TLX.ini.

## From Windows 7

The directory is normally located under C:\Programmes (X86) Novaline.

Start the Windows Explorer.

Navigate to the directory C:\Programmes (X86).

Search for the *Novaline* directory.

Start the context menu by clicking the right mouse button on the Novaline folder, then select *Properties*.

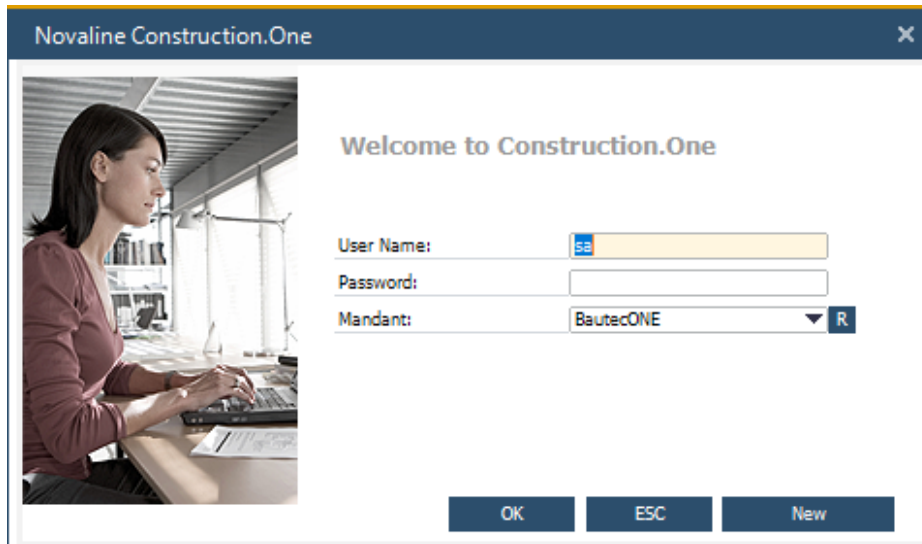
In the *Security* tab, a new user can be created with *Edit*. A new window is opened with *Add*. Enter the text *everyone* and let the system check it. After accepting the user *everyone*, this user is in the folder Authorisations for Novaline. Mark *Full access* with a tick here.

or alternatively give the user of the computer the permission to read / write in Novaline. This is also done via the context menu described above  
Then close the Explorer. The preparation is complete.

The desktop icon for quickly starting the software is created during installation.

Alternatively, the programme can be selected via the Windows menu selection.

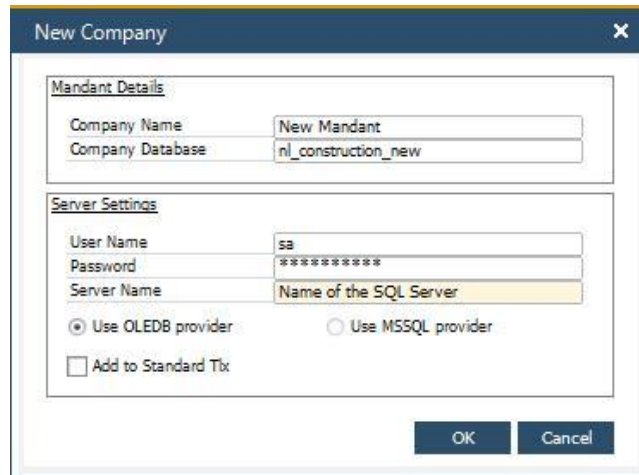
After the first programme start, the following window is displayed:



In this dialogue, a new client is created via the **<New>** button:

## New client

### Client data



The client name is freely selectable, as is the name of the database (company database). The prefix **nl\_Construction\_XXXXX** is recommended to clearly define the construction programme.

(Our example **nl\_Construction**)

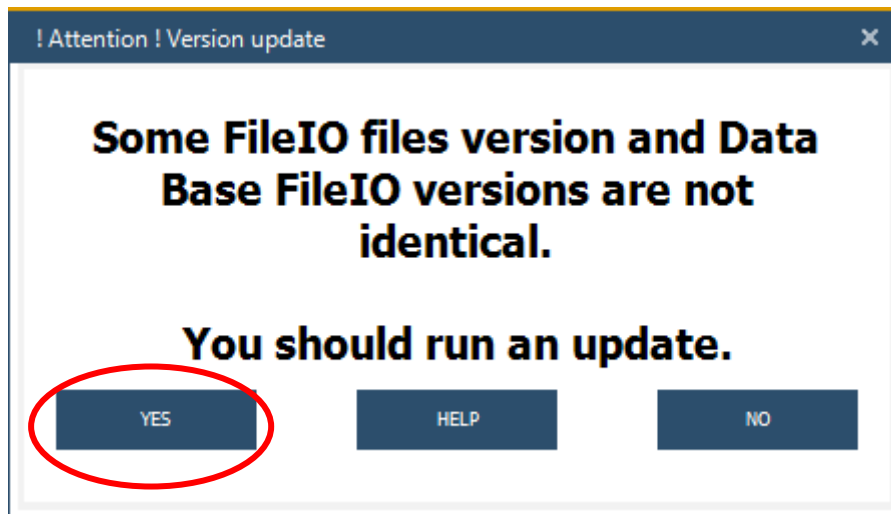
User name and password depend on the installation of the SQL server, usually the user is **sa**, the password can be requested from your administrator.

#### **Attention :**

With SQL Server 2012, the server name can be displayed in the programme - SQL Server Management Studio Express.

The field Server name can also contain (local) if it is a single-user installation. In multi-user operation, the server name must be entered.

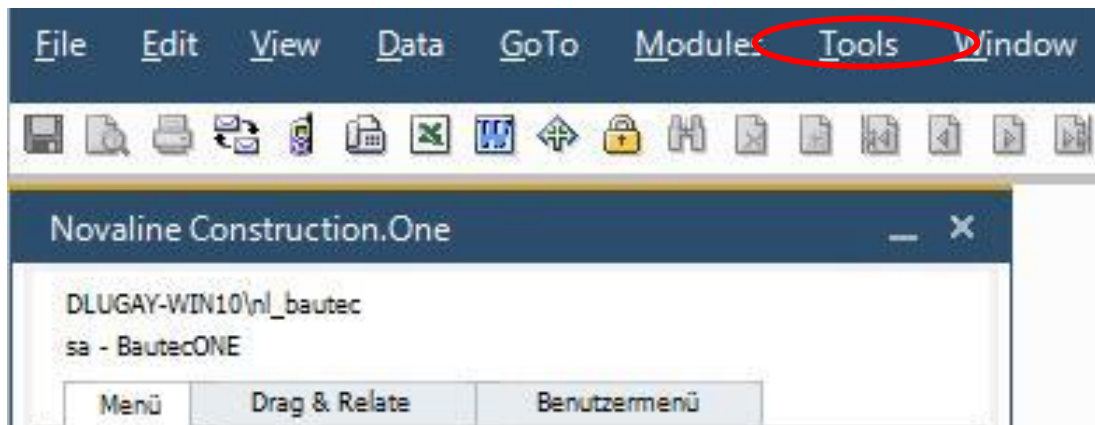
After confirming with  , the following window appears:



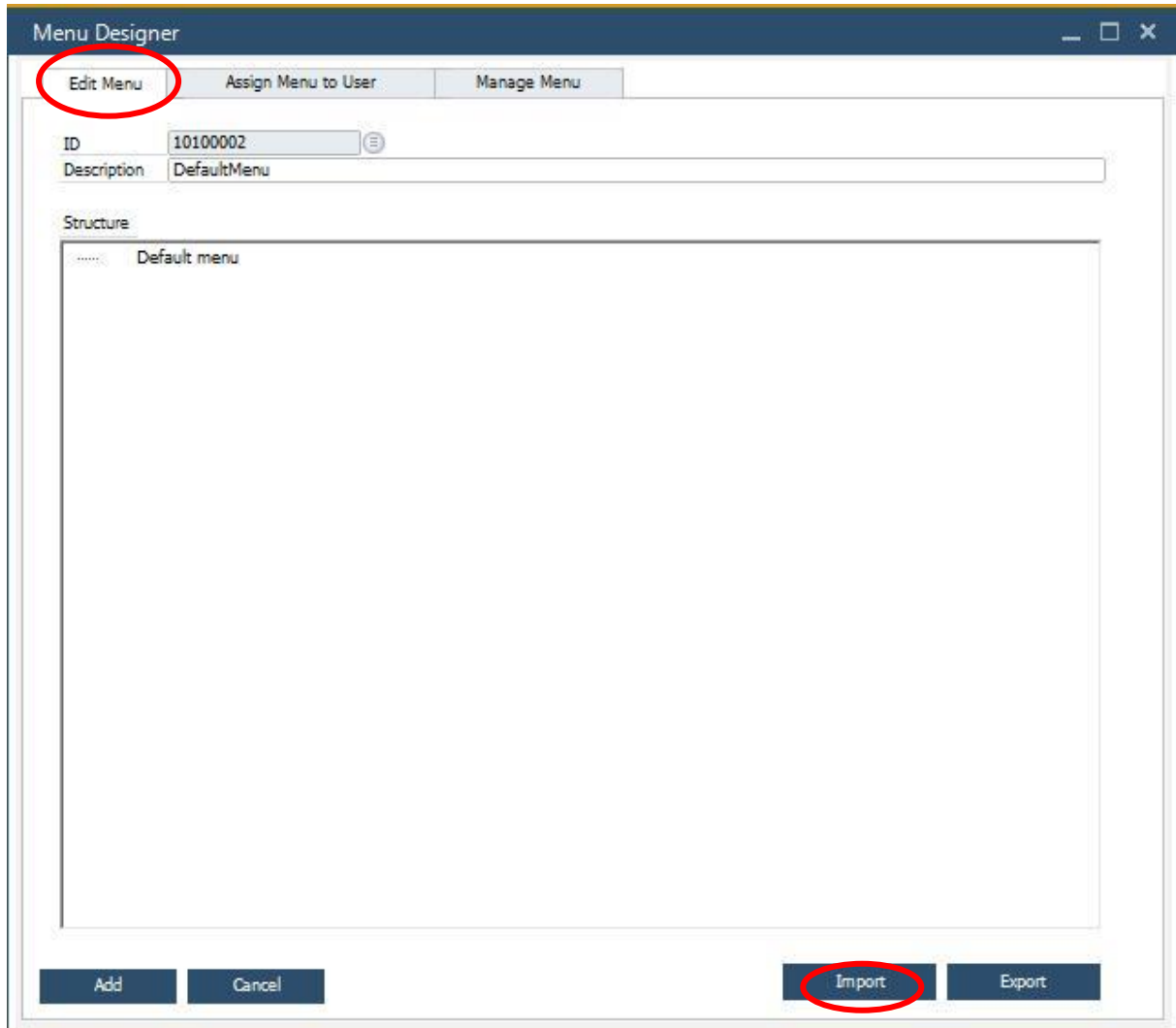
Answer the question about the update with **<Yes>**.

An empty database is created. The first screen after the database has been created shows an empty programme frame without menu entries.

To set up the menu, start the **menu designer** under the menu **tools**.



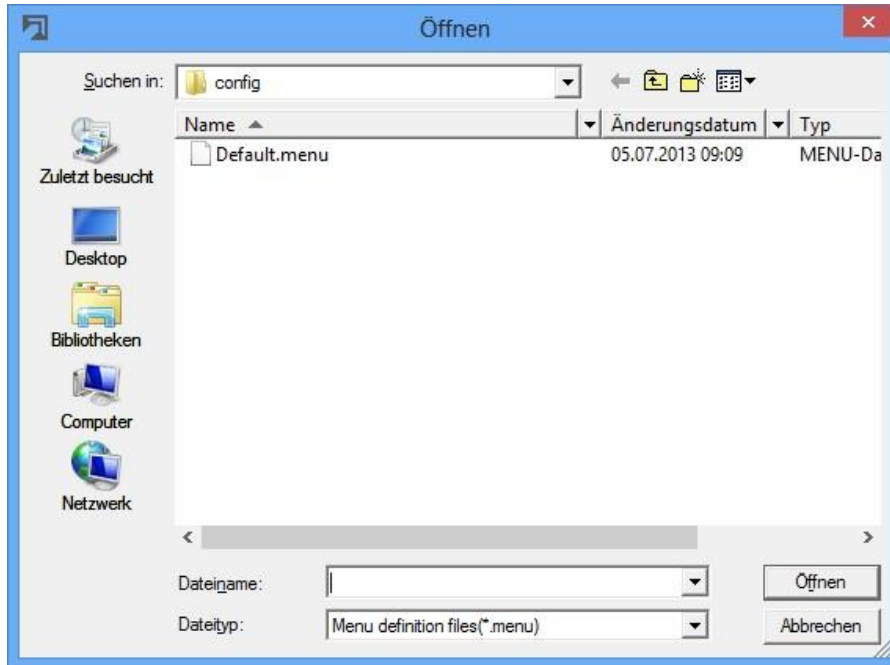
## Menu designer



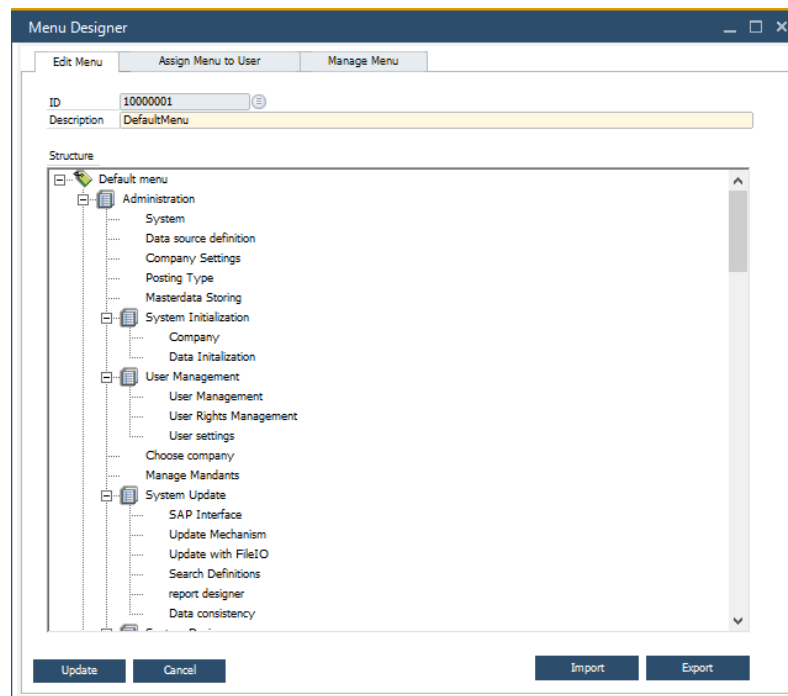
Under the **Edit Menu** tab, start importing the standard menu with **<Import>**.



## Import default menu

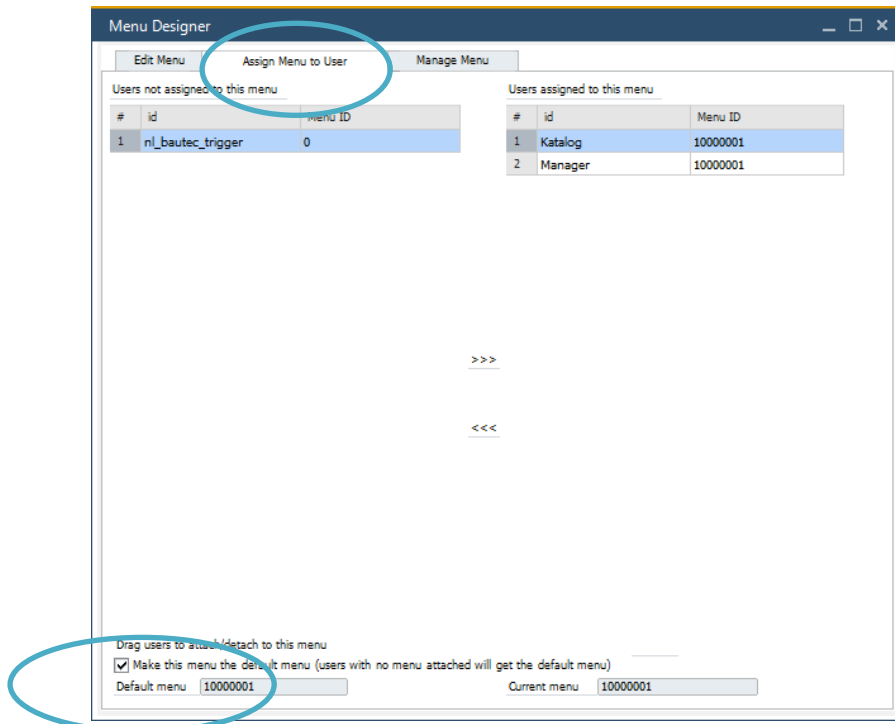


The **Default.menu** file is offered in the mask that is now opening. After marking it with **<Open>**, it will be applied.

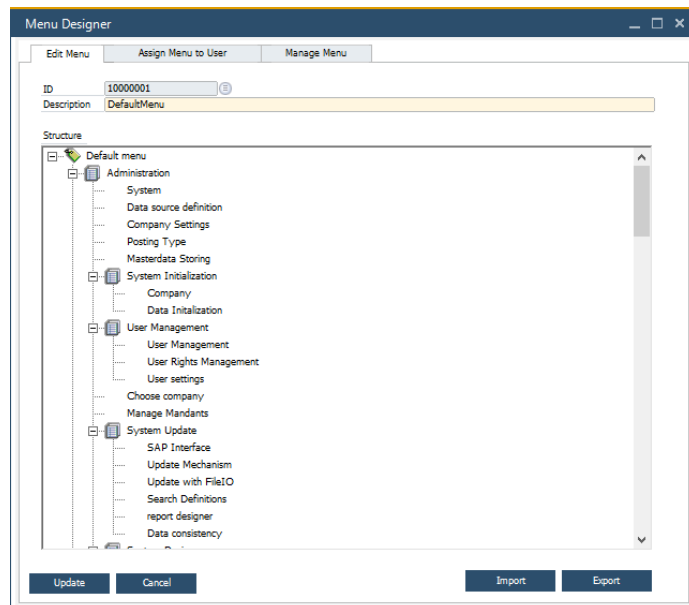


The menu view appears. The menu name can be changed under Long text.

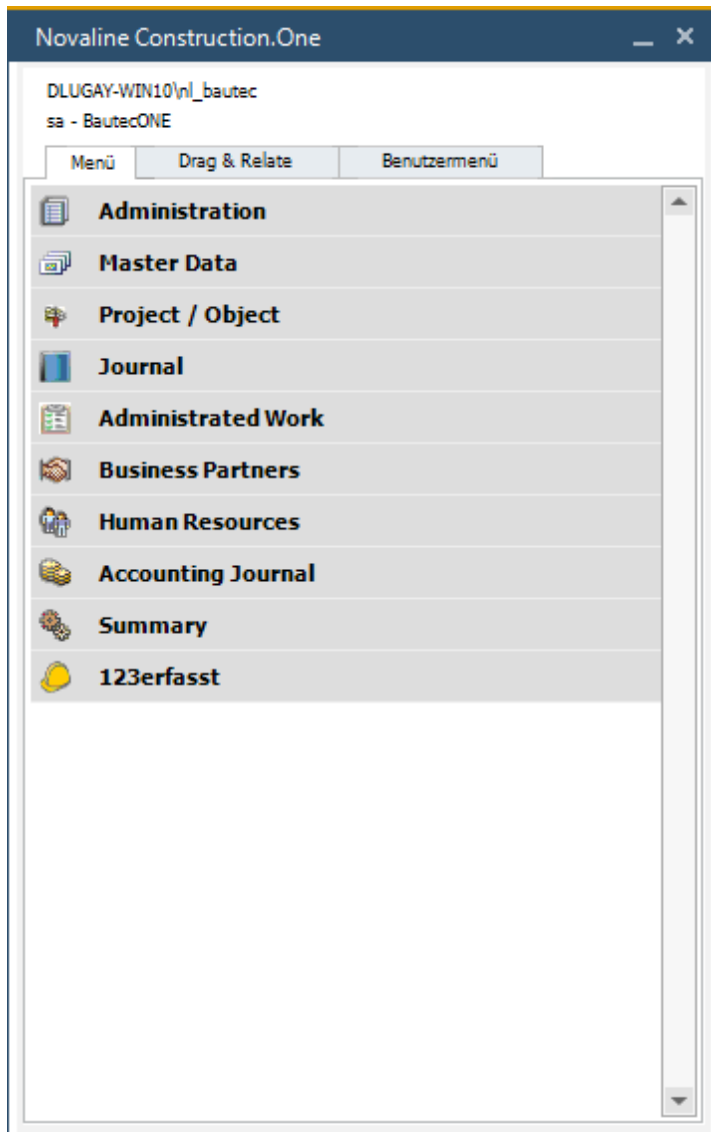
Now switch to the **user-related menu assignment** tab.



Here you activate the checkbox **Current menu should become the default menu**.



Then switch back to the **Edit menu** tab and finish the installation with **<Add>** and **<OK>**.



An empty Database is now created.

Once the database has been created, Construction.One can now be configured.

This document does not claim to be complete. Subject to change without notice.

© by Novaline Informationstechnologie GmbH, Rheine